

**FYE 2012 BUDGET
PRESENTATION
DEPARTMENT OF PUBLIC
WORKS
CITY OF FERNDALE
APRIL 20, 2011**

WHAT WE DO ANY WHY

Maintain/manage and engineer and construct, with staff and through contractors, municipal facilities, structures, properties, grounds, parks, trees, streets and highways, sanitary and storm sewer system, water distribution system, lighting, vehicles and equipment and provide solid-waste collection services; and protect and ensure the public health, safety and welfare as mandated by the City charter and ordinances and by County, State and Federal statute.

Provide support services to other City departments and to private and non-profit groups and organizations.

Act as emergency first-responders.

WHO WE ARE

FYE 2001

Director	1.0
Superintendent	1.0
Parks/Forestry Supervisor	1.0
Water System Supervisor	1.0
Engineering Technician	1.0
Clerical	1.0
Recycling Coordinator	1.0
Sanitation Inspector	0.5
Hourly Personnel	<u>28.0</u>
	35.5
Seasonal Laborers	10.0

WHO WE ARE

FYE 2010

Director	1.0
Superintendent	1.0
Parks/Forestry Supervisor	1.0
Water System Supervisor	1.0
Engineering Technician	1.0
Clerical	1.0
Sanitation Inspector	0.5
Hourly Personnel	<u>25.0</u>
	31.5
Seasonal Laborers	7.0

Staff Reduction from FYE01 of 11%

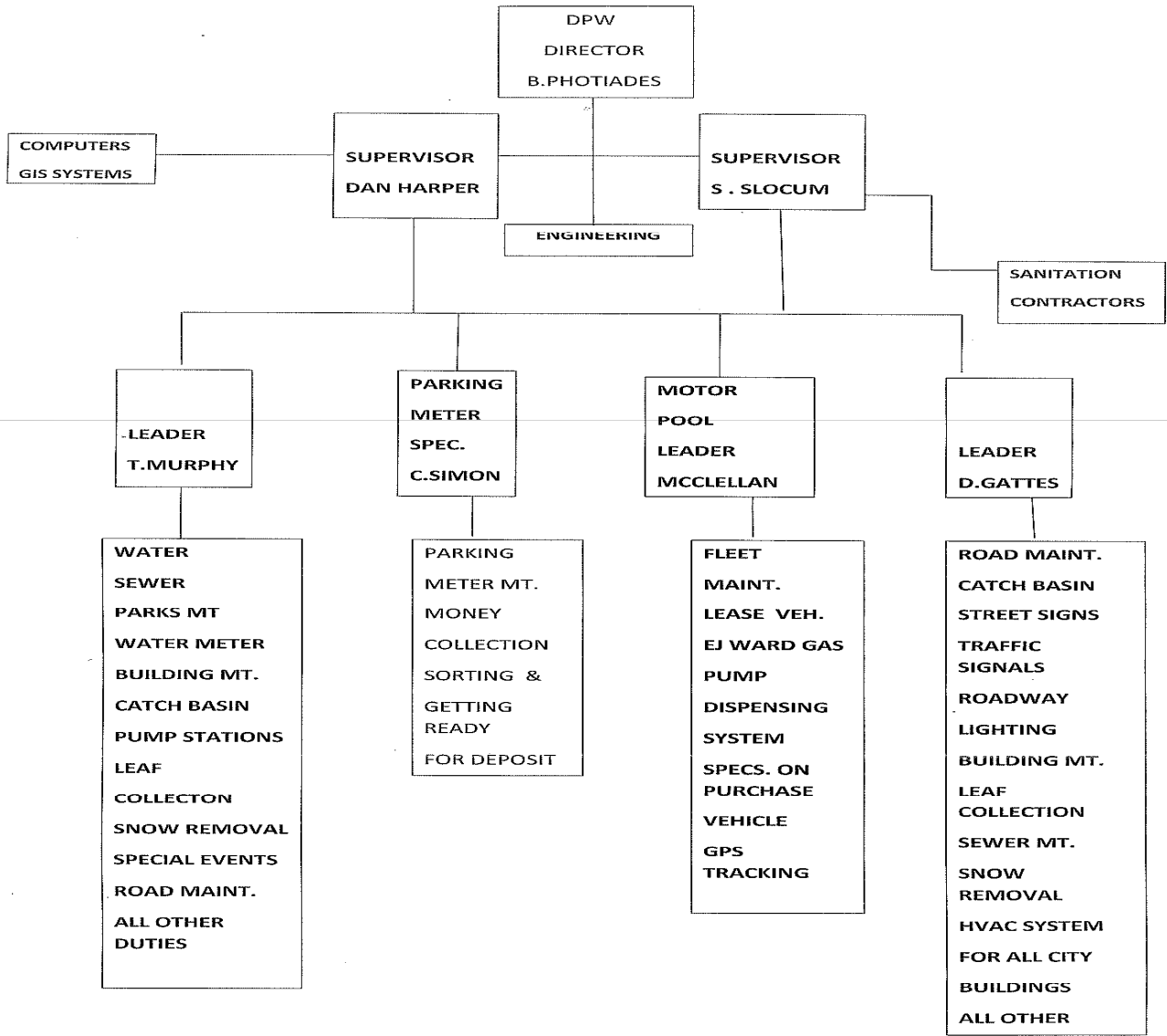
WHO WE ARE

FYE 2011

Director	1.0
Parks/Forestry Supervisor	1.0
Water System Supervisor	1.0
Clerical	1.0
Sanitation Inspector	0.5
Hourly Personnel	<u>21.0</u>
	25.5
Seasonal Laborer	7.0

Staff Reduction from FYE01 of 28%, including FYE11 of 19 %

DPW ORGANIZATIONAL FLOW CHART



COMPUTERS
GIS SYSTEMS

SUPERVISOR
DAN HARPER

DPW
DIRECTOR
B. PHOTIADES

ENGINEERING

SUPERVISOR
S. SLOCUM

SANITATION
CONTRACTORS

LEADER
T. MURPHY

PARKING
METER
SPEC.
C. SIMON

MOTOR
POOL
LEADER
MCCLELLAN

LEADER
D. GATTES

WATER
SEWER
PARKS MT
WATER METER
BUILDING MT.
CATCH BASIN
PUMP STATIONS
LEAF
COLLECTON
SNOW REMOVAL
SPECIAL EVENTS
ROAD MAINT.
ALL OTHER
DUTIES

PARKING
METER MT.
MONEY
COLLECTION
SORTING &
GETTING
READY
FOR DEPOSIT

FLEET
MAINT.
LEASE VEH.
EJ WARD GAS
PUMP
DISPENSING
SYSTEM
SPECS. ON
PURCHASE
VEHICLE
GPS
TRACKING

ROAD MAINT.
CATCH BASIN
STREET SIGNS
TRAFFIC
SIGNALS
ROADWAY
LIGHTING
BUILDING MT.
LEAF
COLLECTION
SEWER MT.
SNOW
REMOVAL
HVAC SYSTEM
FOR ALL CITY
BUILDINGS
ALL OTHER



REQUESTED FYE 2012 EXPENDITURES

\$16,373,352
(41% of Total City Budget)

Salary/Wages/Overtime
2,704,680
(17% of DPW Budget)

OVERTIME

•Auto Parking	1,000
•DPW General	-0-
•Vehicle/Equipment	10,000
•Sidewalk Program	-0-
•Water/Sewer*	71,000
•Local Streets	9,600
•Major Streets	10,000
•Sanitation	<u>10,000</u>
	111,600
Less Reimbursement	
•Leaf collection	12,764
•MDOT (wages)	11,363
•MDOT (fringes)	<u>9,253</u>
	33,380
NET	78,220

*64% of Budget

AUTO PARKING

PERSONNEL

•DPW Specialist	1.00
•DPW Grade 1	<u>0.25</u>
•Full-time Employees	1.25
Parking Enforcement Officers	
•35 hrs/week	1.00
•24 hrs/week	<u>1.00</u>
•Part-time Employees	2.00 = 1.48 FTE

SERVICES

- Maintain and repair the infrastructure of 12 parking lots (including lights and screening walls) and various on-street locations comprising 1221 metered spaces
- Repair and replace manual and electronic meter heads
- Provide snow and ice control and cleaning of metered spaces
- Enforce meters
- Collect meter revenue
- Maintain landscaped beds/grounds

AUTO PARKING

REVENUE

• Fees	700,000
• Fines	37,000
• Interest	<u>1,000</u>
	738,000

EXPENDITURES

• Personnel	165,335
• Supplies/meter replacement	85,000
• Depreciation	76,000
• Equipment rental	52,000
• Utilities	22,000
• Contractual	20,000
• Repairs	15,000
• Grounds maintenance	<u>5,000</u>
	440,335

REVENUE OVER EXPENDITURE

297,665

PROJECTED FUND BALANCE

(6-30-12)

1,251,953

AUTO PARKING

Five-Year Capital Improvement Plan

<u>Lot</u>	<u>Present Condition</u>	<u>Estimated Cost</u>
Library	Poor	98,000
East Breckenridge	Poor	72,000
Falvey	Poor	69,200
Schnell-Carah	Poor	53,200
Planavon	Fair	72,000
West Breckenridge	Fair	118,400
West Troy	Fair	374,680
Withington	Fair	<u>47,400</u>
		904,880

DPW GENERAL

SERVICES

- Maintain and repair municipal buildings, structures, equipment, grounds, property, parks, and lights
- Plant trees
- Inspect permitted work in right-of-way

REVENUE

- Contractor permits, grant, tree planting, and rental income 12,700

EXPENDITURES

- Supplies, contractual services, bldg/grounds maintenance, equipment rental 385,750

REVENUE OVER EXPENDITURE (373,050)

VEHICLE AND EQUIPMENT

PERSONNEL

•Motor Pool Leader	1.00
•Auto Mechanic	1.00
•Clerk Typist II	<u>0.25</u>
•Full-time Employees	2.25

SERVICES

- Maintain and repair over 80 vehicles and 100 specialized pieces of equipment
- Procure vehicles and equipment
- Lease vehicles
- Provide fuel and oil, including fuel to the Ferndale School District
- Record and issue stock

VEHICLE AND EQUIPMENT

REVENUE

•Equipment rental income	818,900
•Vehicle lease charges	741,875
•Other (bldg rental, handling chg, asset sales)	<u>36,000</u>
	1,596,775

EXPENDITURES

•Personnel	251,731
•Depreciation	462,000
•Capital outlay	364,000
•Repair/maintenance	200,000
•Liability insurance	187,000
•Motor fuel/lubricants	151,000
•Contractual services	55,000
•Operating supplies	50,000
•Vehicle leasing	48,876
•Utilities	33,000
•Other	<u>12,500</u>
	1,815,107

REVENUE OVER EXPENDITURE	(218,232)
PROJECTED FUND BALANCE (6-30-12)	970,107

SIDEWALK PROGRAM

REVENUE	165,500
EXPENDITURES	
•Property-owner	163,211
•City (non-compliant ADA curb ramps)	
	<u>167,289</u>
	330,50
REVENUE OVER EXPENDITURE	(165,000)

SIDEWALK PROGRAM

SERVICES

- Area of replacement: east of Hilton, south of Nine Mile Road
- 450 properties inspected (68% of area) 56, or 12%, exceed 500 Hardship Guideline. Of that, 25 are industrial properties.
- 340 (average property owner's cost)
- Breakdown of causes for replacement

Stubber	51.1%
Cracked	42.8%
Drainage	1.9%
Holes/pitting	1.7%
Slope	0.7%
Other	1.8%

- Breakdown of assessments

<u>Range</u>	<u>Number</u>	<u>Percent</u>
\$12 - \$99	138	30.7%
\$100 - \$249	168	37.3%
\$250 - \$499	88	19.6%
\$500 - \$999	28	6.2%
\$1,000 - \$1,999	21	4.6%
\$2,000+	7	1.6^

WHO WE WILL BE

DPW/SIDEWALKS

15% - 20%

- Eliminate replacing handicap ramps in the area east of the Grand Trunk Western Railroad and south of Nine Mile, saving 153,292 after incurring engineering expenses of 13,997. Would not upgrade ramps to include warning domes and new slopes and widths.
- Eliminate sidewalk program, reducing expenditures by 152,074 after incurring engineering expenses of 11,137. Revenue would be reduced by 165,500. City would have greater exposure to claims and lawsuits.

WATER AND SEWER

PERSONNEL

•DPW Director	0.25
•DPW Supervisor	1.25
•Clerk Typist II	0.25
•Receiving Teller	1.00
•DPW Leader	1.00
•DPW Grade 3	4.00
•DPW Grade 1	<u>5.00</u>
•Full-time Employees	12.75

SERVICES

- Provide about 561 million gallons of safe, potable water to over 10,000 customers, and sanitary and storm water collection and disposal
- Maintain and replace, as needed, 87 miles of water main; 470 fire hydrants; 900 gate valve and wells; two pump stations, one with an elevated three-million-gallon water-storage tank; 80 miles of sewer main; 1700 manholes; and 1900 catch basins
- Repair and read meters and bill customers

WATER AND SEWER

REVENUE

•Sales (based on sales of 70,000 mcf)	7,957,000
•Meter read/operation fee	480,000
•Penalties	390,000
•Meter charge	255,000
•Other	<u>43,100</u>
	9,125,100

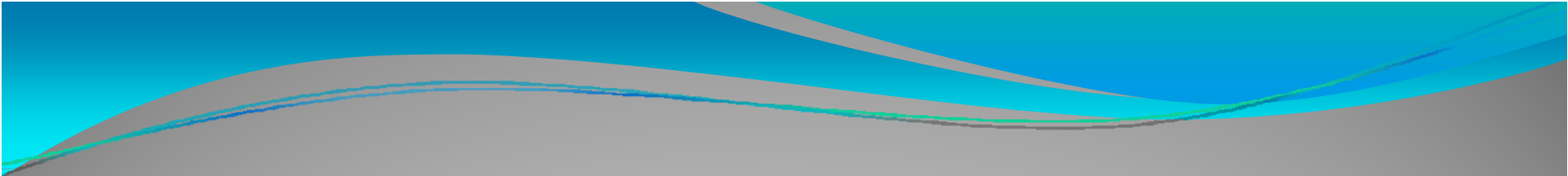
EXPENDITURES*

•Personnel	1,221,631
•Sewage treatment	3,434,944
•Depreciation	2,037,000
•Debt service and interest	1,336,225
•Water purchase	711,000
•Repair/maintenance	350,000
•Equipment rental	150,000
•Other	<u>244,443</u>
	9,485,243

(*79% are fixed)

REVENUE OVER EXPENDITURE (360,143)

PROJECTED FUND BALANCE (6-30-12) 1,197,185



SEWER CAPITAL IMPROVEMENT PROJECT

No appropriation, as this program will be completed in FYE11 with the relining of a mainline sewer along Eight Mile.

LOCAL STREETS

PERSONNEL

•DPW Director	0.25
•DPW Specialist	1.00
•DPW Grade 3	<u>1.00</u>
•Full-time Employees	2.25

SERVICES

- Provide pavement, traffic control, striping and sign maintenance and snow/ice control of 54 miles
- Resurface, joint-repair concrete and curb/gutter replacement

LOCAL STREETS

REVENUE

•Act 51 gas/weight tax distribution*	322,863
•Major Streets fund contribution	<u>95,100</u>
(*348,263 in FYE02)	417,863

EXPENDITURES

•Personnel	239,687
•Winter maintenance	77,250
•Street/sign maintenance	66,000
•Capital	23,000
•Other (including 18,000 for sycamore and American elm treatments)	<u>26,682</u>
	432,619

REVENUE OVER EXPENDITURE (14,756)

PROJECTED FUND BALANCE (6-30-12) 129,399



FUTURE LOCAL STREETS CAPITAL PROJECTS

2013 – 2018

\$14,002,500

MAJOR STREETS

PERSONNEL

•DPW Director	0.25
•DPW Supervisor	0.25
•Clerk Typist II	0.25
•DPW Leader	1.00
•DPW Grade 2	0.75
•DPW Grade 1	<u>1.00</u>
•Full-time Employees	3.50

SERVICES

- Provide pavement, traffic-control, striping, and sign maintenance and snow/ice control of 21 miles

MAJOR STREETS

REVENUE

• Act 51 MVHF tax distribution	837,144
• Trunkline maintenance contract*	104,100
• Metro Act 48 distribution	<u>59,000</u>
(*881,841 in FYE02)	1,000,244

EXPENDITURES

• Personnel	341,712
• Winter maintenance	151,500
• Trunkline contribution	104,100
• Contribution to Local Streets*	95,000
• Other	<u>144,817</u>
(*may transfer up to 50% of Major Streets MVHF revenue)	837,129

REVENUE OVER EXPENDITURE 163,115

PROJECTED FUND BALANCE (6-30-12) 328,544

FUTURE MAJOR STREETS CAPITAL PROJECTS

•2013 Nine Mile resurfacing, Planavon to Pinecrest (80/20 FAC Project of 400,000)	80,000
•2014 Pinecrest resurfacing, Nine Mile to Oakridge (100% City-funded)	340,000
•2014 Nine Mile resurfacing, to Westend (50/50 FAC Project of 1,086,000)	543,000
•2015 Hilton resurfacing, Eight Mile to Nine Mile (50/50 FAC Project of 975,394)	487,967
•2016 Hilton resurfacing, Woodward Heights to Ten Mile (100 percent City-funded)	430,280

FUTURE MAJOR STREETS CAPITAL PROJECTS

•2016 Livernois resurfacing, Eight Mile to Nine Mile (100 percent City-funded)	1,007,826
•Secondary majors	728,000
•TOTAL	3,617,073

SANITATION

PERSONNEL

•DPW Director	0.25
•DPW Supervisor	0.50
•Clerk Typist II	0.25
•PW Grade 3	2.00
•PW Grade 1	<u>1.00</u>
•Full-time Employees	4.00

Sanitation Inspector

•30 hrs/week	1.00
--------------	------

Seasonal Laborers

•40 hrs/week	<u>6.00</u>
21 wks/year/year each	7.00 = 3.17 FTE

SANITATION

SERVICES

- Solid waste, yard waste, brush, recyclables, household hazardous waste and bulky waste for 9,686 residential and apartment units
- Collect solid waste from 398 commercial businesses, and solid waste collection within the CBD via four compactors
- Trim and remove City street and park trees
- Collect and dispose of fall leaves
- Enforce solid-waste routes and maintain CBD compactors
- Collect and remove trash and litter in parks
- Dispose spoils from DPW utility operations
- Sweep streets and parking lots
- Prepare and mail DPW/City calendar
- Provide free motor oil drop-off and compost
- Rent trucks for residential cleanup/disposal

SANITATION

REVENUE

•Property taxes (2.1815 mills)	1,169,000
•Sanitation fees (first time revenue from fees exceeds that of property tax)	1,347,600
•Intergovernment contracts (Use of Southwest Storage Yard for fall leaf collection by Oak Park, Pleasant Ridge, Huntington Woods, and Lathrup Village)	37,000
•Truck rental, sale of recycling bins	<u>7,000</u>
	2,560,600

EXPENDITURES

•Personnel	484,584
•Collection and disposal	1,700,738
•Equipment rental	340,000
•Tree trimming and removal	62,500
•Other	<u>62,705</u>
	2,650,527

REVENUE OVER EXPENDITURE (89,927)

PROJECTED FUND BALANCE (6-30-12) 5,732

WORKING TOGETHER
ALTERNATIVE SERVICE DELIVERY
CURRENT AND NEW CONTRACTING
AND INTER-CITY SHARED SERVICES

CURRENT:

- Fencing/guardrail, custodial, snow removal (parking lots), sidewalk and masonry, park and boulevard clean up and mowing, plumbing, cross-connection control, automated water meter reading, cleanup and mowing, street-pavement repairs, sewer repairs, engineering, vehicle and equipment repairs, electrical, tree planting, trimming and removal, athletic-field maintenance, lawn and turf management, brush chipping, and waste and recycling collection and inter-city mutual aid.

NEW CONTRACTING & INTER-CITY SHARED SERVICES:

- Streetlight maintenance (decorative pedestrian lights), traffic signals and signs, park cleanup and mowing (large parks), custodial, vehicle and equipment repair and maintenance, catch-basin and sewer cleaning, water main and sewer repairs, leaf-collection (fall), snow and ice control, water meter and parking meter repairs.



Questions ?